

## GROUND LEVEL:

- |                                      |   |
|--------------------------------------|---|
| 1 Pedestrian Entrance                | 9 Party Lawn  |
| 2 Guardhouse                         | 10 Aroma Trail  |
| 3 Arrival Boulevard                  | 11 Kid's Play   |
| 4 Grand Concierge Lobby              | 12 Recreational Tennis Court with Half Basketball Court |
| 5 Grand Drop-Off                     | 13 Substation   |
| 6 Feature Sculpture                  | 14 Management Office                                    |
| 7 The Verandah with Teppanyaki Grill | 15 Bin Centre   |
| 8 Garden Courtyard                   |   |

## LEVEL 6:

- |                             |                  |
|-----------------------------|------------------|
| 16 Pool Deck                | 24 Wellness Deck |
| 17 50m Lap Pool             | 25 Aqua Gym      |
| 18 Aqua Deck                | 26 Wellness Gym  |
| 19 Dining Pavilion with BBQ | 27 Changing Room |
| 20 Club Lounge              |                  |
| 21 Kid's Pool               |                  |
| 22 Jacuzzi                  |                  |
| 23 Wellness Pool            |                  |

# Schematic Chart

DRAFT

18 Dunearn Road Singapore 309421

Unit Floor	01	02	03	04	05	06	07	08	09	10	11	12
30	PH-2	PH-3	PH-3	PH-2	PH-1	PH-1	PH-2	PH-4	PH-5	PH-2	PH-1	PH-1
29	B1	C1	C1	B1	A1	A1	B1	C2	D1	B1	A1	A1
28	B1	C1	C1	B1	A1	A1	B1	C2	D1	B1	A1	A1
27	B1	C1	C1	B1	A1	A1	B1	C2	D1	B1	A1	A1
26	B1	C1	C1	B1	A1	A1	B1	C2	D1	B1	A1	A1
25	B1	C1	C1	B1	A1	A1	B1	C2	D1	B1	A1	A1
24	B1	C1	C1	B1	A1	A1	B1	C2	D1	B1	A1	A1
23	B1	C1	C1	B1	A1	A1	B1	C2	D1	B1	A1	A1
22	B1	C1	C1	B1	A1	A1	B1	C2	D1	B1	A1	A1
21	B1	C1	C1	B1	A1	A1	B1	C2	D1	B1	A1	A1
20	B1	C1	C1	B1	A1	A1	B1	C2	D1	B1	A1	A1
19	B1	C1	C1	B1	A1	A1	B1	C2	D1	B1	A1	A1
18	B1	C1	C1	B1	A1	A1	B1	C2	D1	B1	A1	A1
17	B1	C1	C1	B1	A1	A1	B1	C2	D1	B1	A1	A1
16	B1	C1	C1	B1	A1	A1	B1	C2	D1	B1	A1	A1
15	B1	C1	C1	B1	A1	A1	B1	C2	D1	B1	A1	A1
14	B1	C1	C1	B1	A1	A1	B1	C2	D1	B1	A1	A1
13	B1	C1	C1	B1	A1	A1	B1	C2	D1	B1	A1	A1
12	B1	C1	C1	B1	A1	A1	B1	C2	D1	B1	A1	A1
11	B1	C1	C1	B1	A1	A1	B1	C2	D1	B1	A1	A1
10	B1	C1	C1	B1	A1	A1	B1	C2	D1	B1	A1	A1
09	B1	C1	C1	B1	A1	A1	B1	C2	D1	B1	A1	A1
08	B1	C1	C1	B1	A1	A1	B1	C2	D1	B1	A1	A1
07	B1	C1	C1	B1	A1	A1	B1	C2	D1	B1	A1	A1
06	B1	C1	C1	B1	A1	A1	B1	C2	D1	B1	A1	A1
05	B1	C1	C1	B1	A1	A1	B1	C2	D1	B1		
04	B1	C1	C1	B1	A1	A1	B1	C2	D1	B1		
03	B1	C1	C1	B1	A1	A1	B1	C2	D1	B1		
02	B1-P	C1-P	C1	B1	A1	A1	B1	C2	D1-P	B1-P		
1E	Carpark											
1D	Carpark											
1C	Carpark											
1B	Carpark											
1A	Carpark											
01	Lobby/Carpark											
B	Carpark											

LEGEND:

<span style="display: inline-block; width: 15px; height: 10px; background-color: #c09090; border: 1px solid #000;"></span> 1-Bedroom	<span style="display: inline-block; width: 15px; height: 10px; background-color: #d98040; border: 1px solid #000;"></span> 2-Bedroom	<span style="display: inline-block; width: 15px; height: 10px; background-color: #a0a0a0; border: 1px solid #000;"></span> 3-Bedroom	<span style="display: inline-block; width: 15px; height: 10px; background-color: #602060; border: 1px solid #000;"></span> 4-Bedroom
--	--	--	--

# 1-Bedroom

DRAFT

## TYPE A1

43 sq m / 463 sq ft

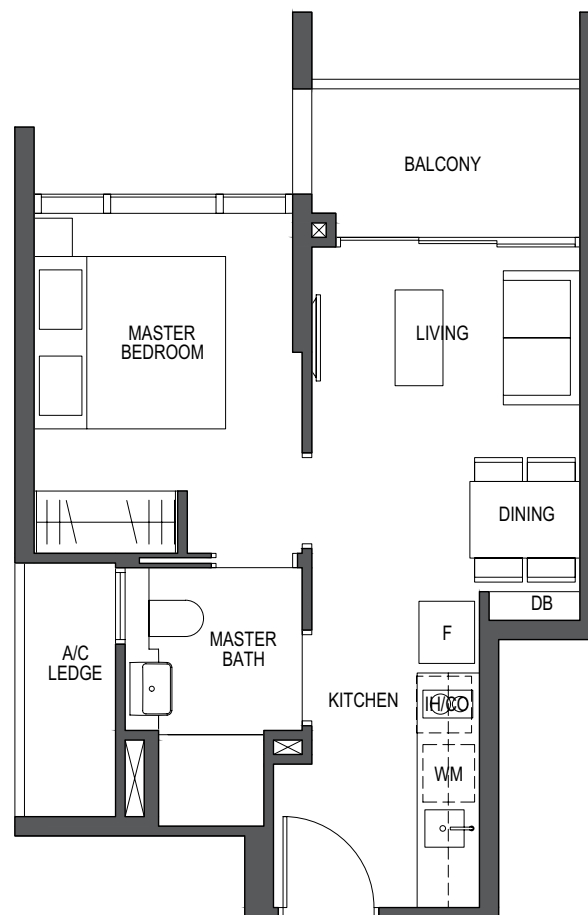
#02-06 to #29-06

#06-12 to #29-12

\*#02-05 to #29-05

\*#06-11 to #29-11

\*Mirror image

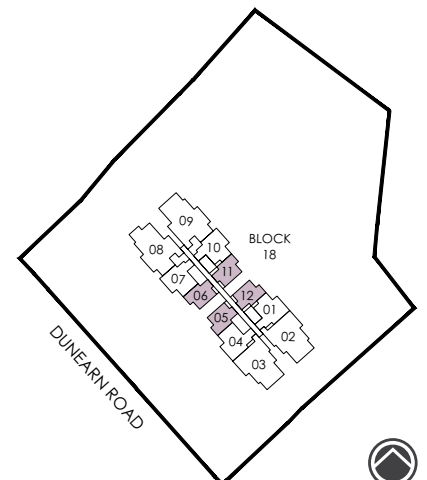


### LEGEND:

F - Fridge  
D - Dryer  
IH - Induction Hob

DW - Dishwasher  
GH - Gas Hob  
DB - Distribution Board

WM - Washer cum Dryer  
CO - Conventional Oven  
W - Washer



# 2-Bedroom

DRAFT

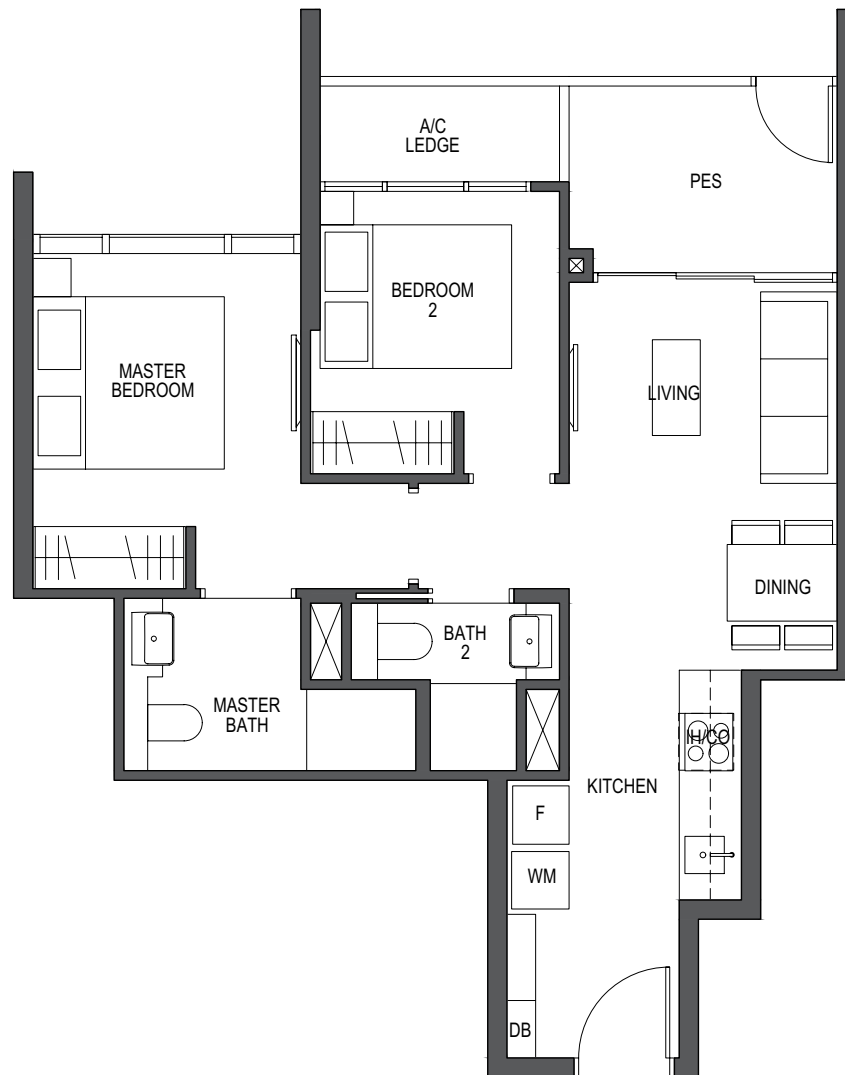
## TYPE B1-P

62 sq m / 667 sq ft

#02-01

\*#02-10

\*Mirror image

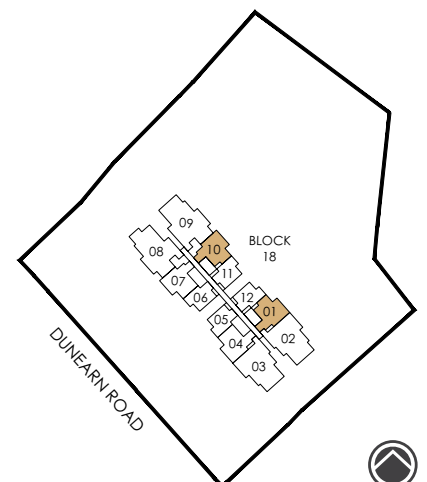


### LEGEND:

F - Fridge  
D - Dryer  
IH - Induction Hob

DW - Dishwasher  
GH - Gas Hob  
DB - Distribution Board

WM - Washer cum Dryer  
CO - Conventional Oven  
W - Washer



# 2-Bedroom

DRAFT

## TYPE B1

62 sq m / 667 sq ft

#02-07 to #29-07

#03-01 to #29-01

\*#02-04 to #29-04

\*#03-10 to #29-10

\*Mirror image

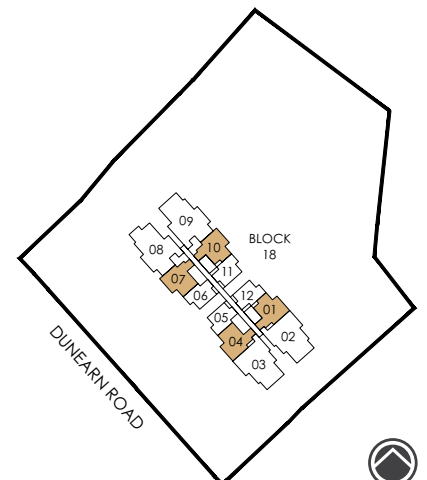


### LEGEND:

F - Fridge  
D - Dryer  
IH - Induction Hob

DW - Dishwasher  
GH - Gas Hob  
DB - Distribution Board

WM - Washer cum Dryer  
CO - Conventional Oven  
W - Washer



# 3-Bedroom

DRAFT

## TYPE C1-P

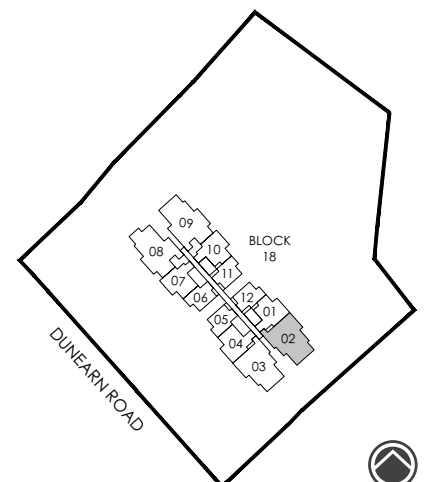
108 sq m / 1163 sq ft

#02-02



### LEGEND:

- |                    |                         |                        |
|--------------------|-------------------------|------------------------|
| F - Fridge         | DW - Dishwasher         | WM - Washer cum Dryer  |
| D - Dryer          | GH - Gas Hob            | CO - Conventional Oven |
| IH - Induction Hob | DB - Distribution Board | W - Washer             |



All plans are subjected to amendments as may be approved by the relevant authorities. Floor areas are approximate measurements and are subjected to final survey. BP Approval No. A1720-00009-2018-BP01 dated 26/08/2019



# 3-Bedroom

DRAFT

## TYPE C1

108 sq m / 1163 sq ft

#03-02 to #29-02

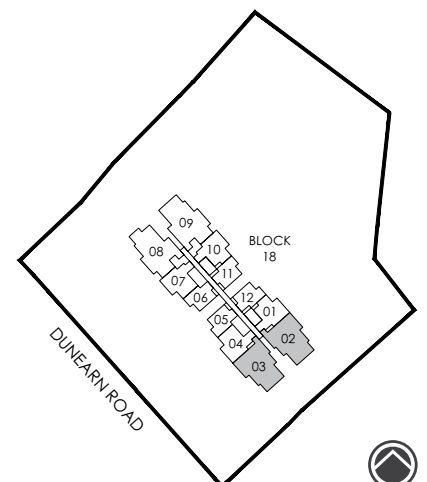
\*#02-03 to #29-03

\*Mirror image



**LEGEND:**

- |                    |                         |                        |
|--------------------|-------------------------|------------------------|
| F - Fridge         | DW - Dishwasher         | WM - Washer cum Dryer  |
| D - Dryer          | GH - Gas Hob            | CO - Conventional Oven |
| IH - Induction Hob | DB - Distribution Board | W - Washer             |



All plans are subjected to amendments as may be approved by the relevant authorities. Floor areas are approximate measurements and are subjected to final survey. BP Approval No. A1720-00009-2018-BP01 dated 26/08/2019



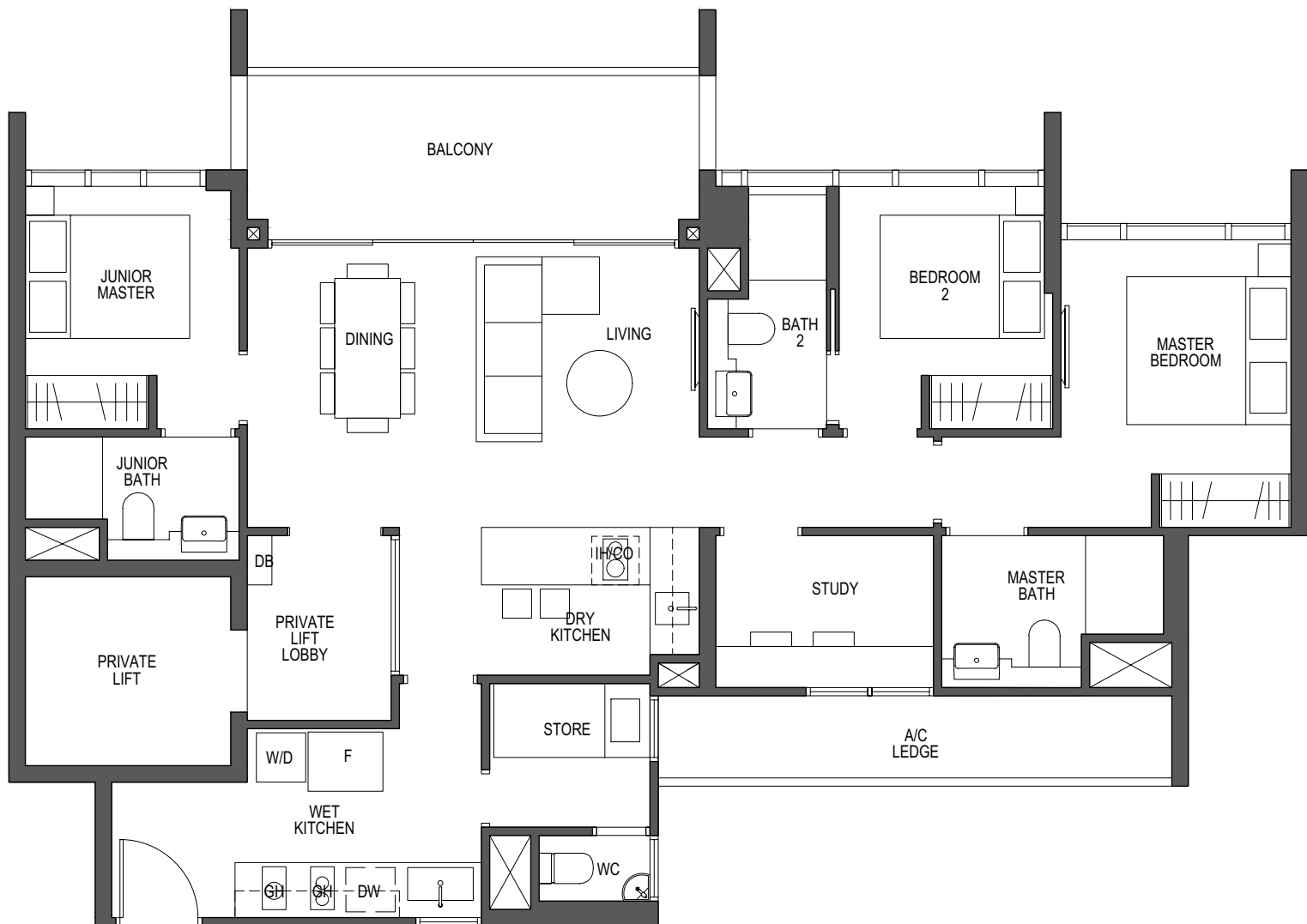
# 3-Bedroom + Study

DRAFT

## TYPE C2

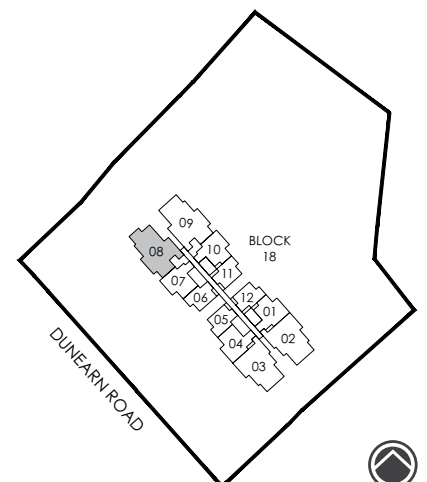
119 sq m / 1281 sq ft

#02-08 to #29-08



**LEGEND:**

- |                    |                         |                        |
|--------------------|-------------------------|------------------------|
| F - Fridge         | DW - Dishwasher         | WM - Washer cum Dryer  |
| D - Dryer          | GH - Gas Hob            | CO - Conventional Oven |
| IH - Induction Hob | DB - Distribution Board | W - Washer             |





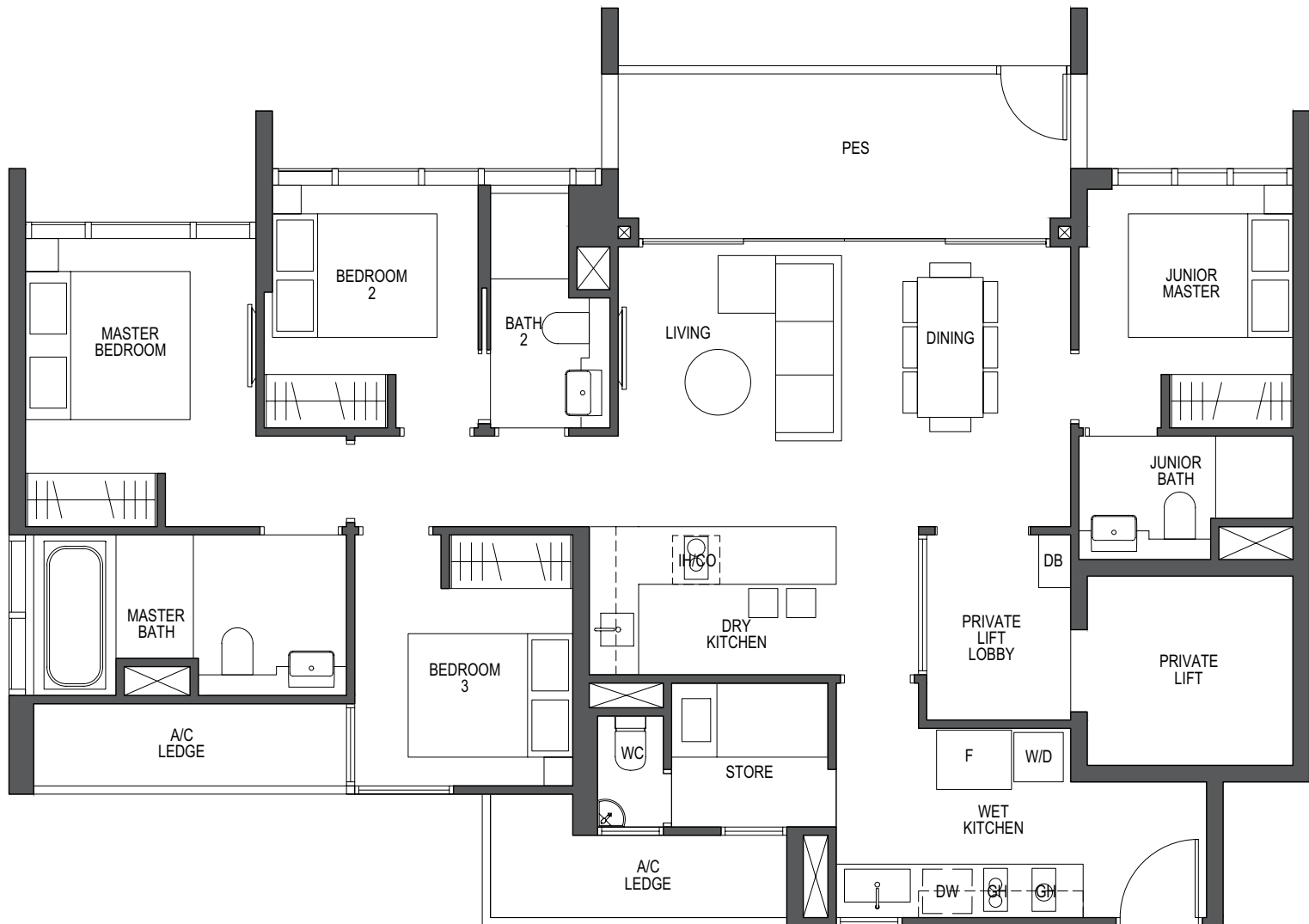
# 4-Bedroom

DRAFT

## TYPE D1-P

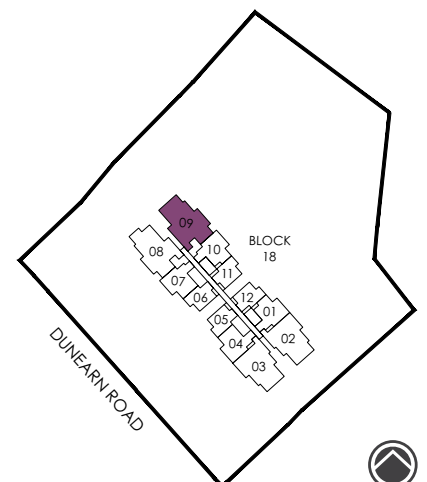
129 sq m / 1389 sq ft

#02-09



**LEGEND:**

- |                    |                         |                        |
|--------------------|-------------------------|------------------------|
| F - Fridge         | DW - Dishwasher         | WM - Washer cum Dryer  |
| D - Dryer          | GH - Gas Hob            | CO - Conventional Oven |
| IH - Induction Hob | DB - Distribution Board | W - Washer             |



All plans are subjected to amendments as may be approved by the relevant authorities. Floor areas are approximate measurements and are subjected to final survey. BP Approval No. A1720-00009-2018-BP01 dated 26/08/2019



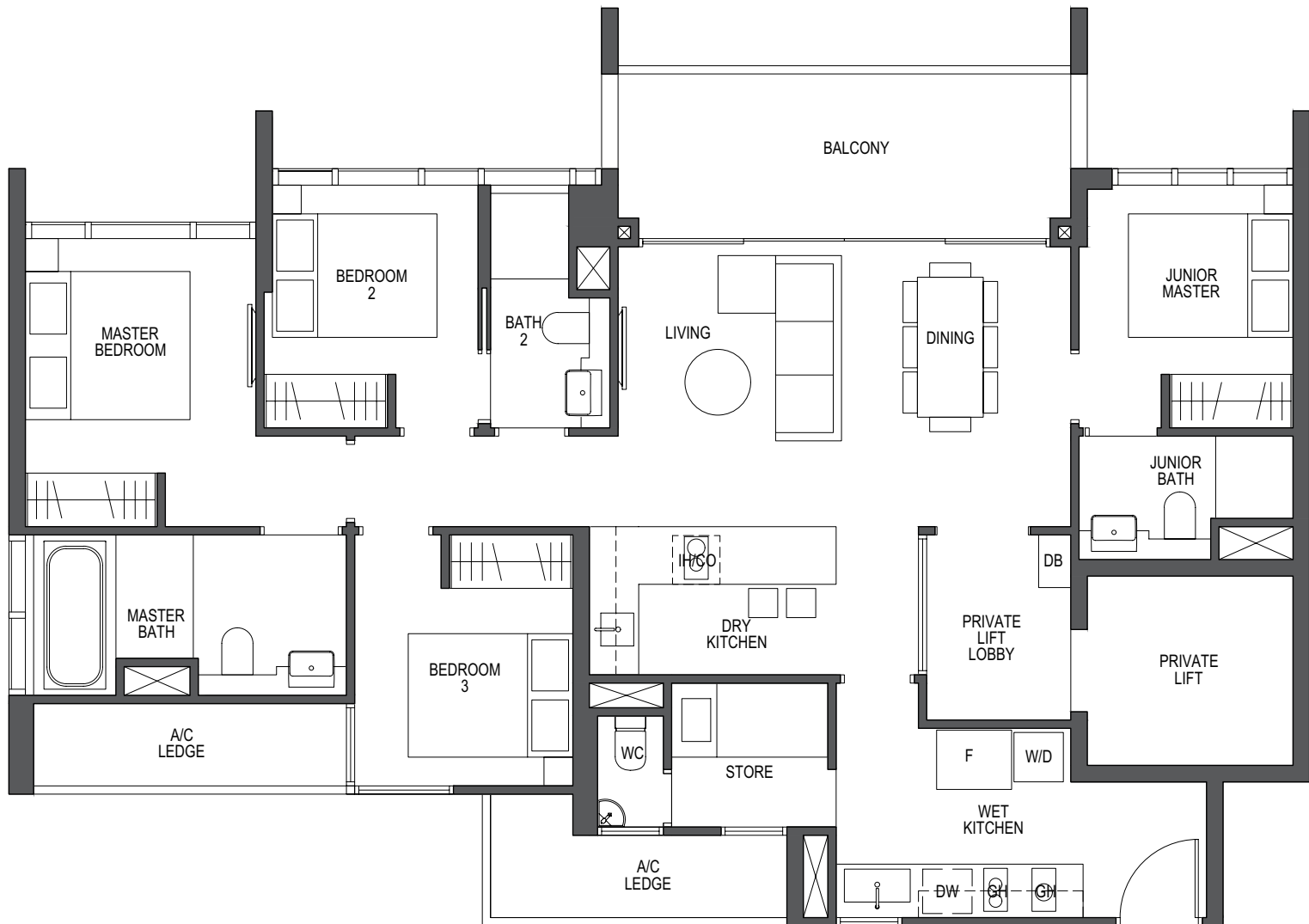
# 4-Bedroom

DRAFT

## TYPE D1

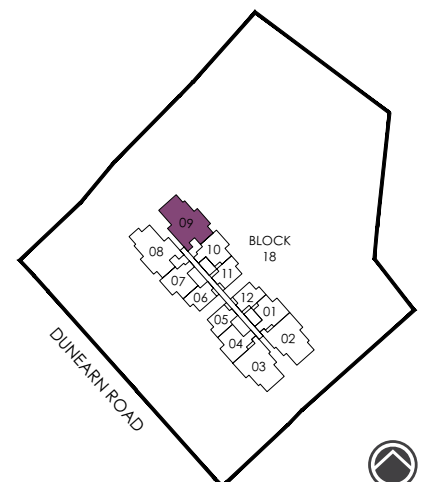
128 sq m / 1378 sq ft

#03-09 to #29-09



**LEGEND:**

- |                    |                         |                        |
|--------------------|-------------------------|------------------------|
| F - Fridge         | DW - Dishwasher         | WM - Washer cum Dryer  |
| D - Dryer          | GH - Gas Hob            | CO - Conventional Oven |
| IH - Induction Hob | DB - Distribution Board | W - Washer             |



All plans are subjected to amendments as may be approved by the relevant authorities. Floor areas are approximate measurements and are subjected to final survey. BP Approval No. A1720-00009-2018-BP01 dated 26/08/2019



# Penthouse

DRAFT

## TYPE PH-1

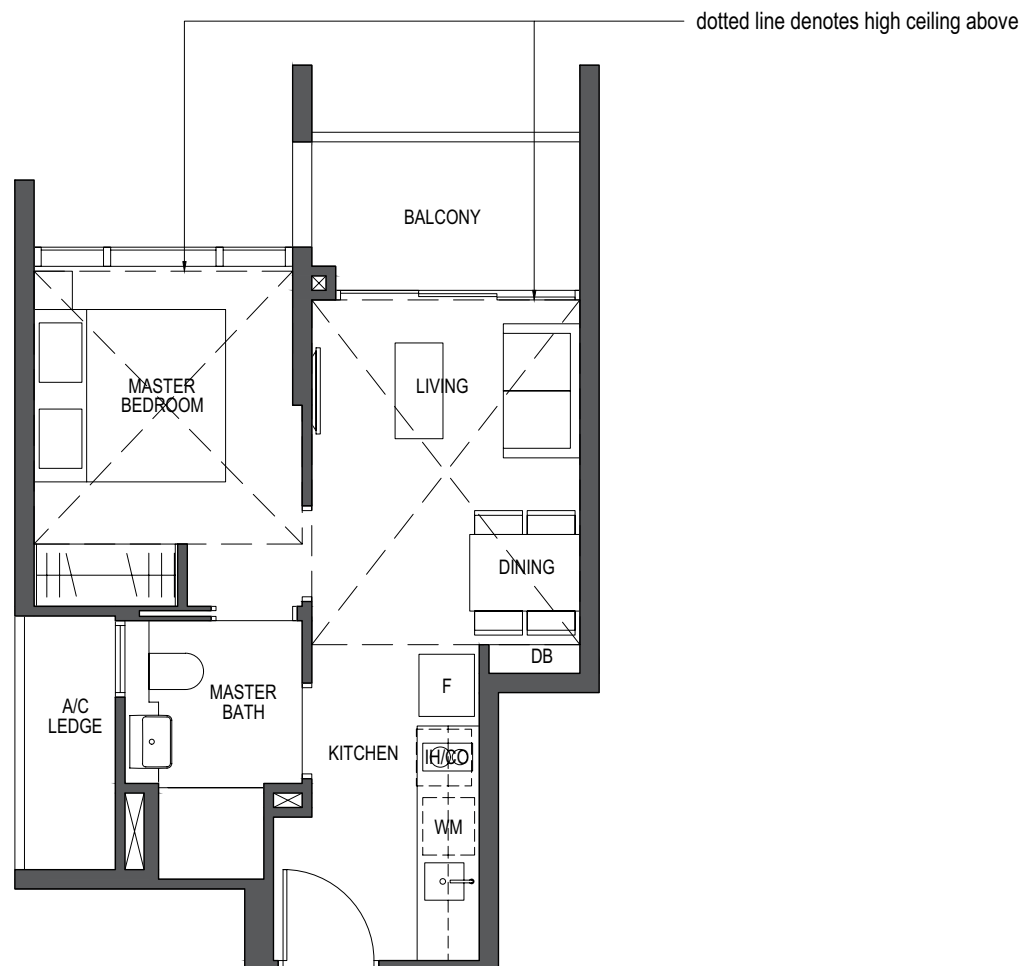
### 1-Bedroom

43 sq m / 463 sq ft

#30-06 & #30-12

\*#30-05 & #30-11

\*Mirror image

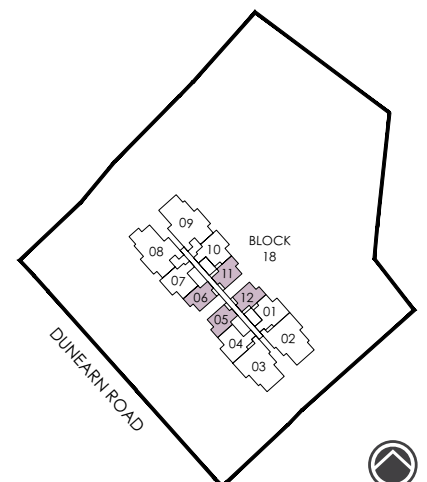


#### LEGEND:

F - Fridge  
D - Dryer  
IH - Induction Hob

DW - Dishwasher  
GH - Gas Hob  
DB - Distribution Board

WM - Washer cum Dryer  
CO - Conventional Oven  
W - Washer



# Penthouse

DRAFT

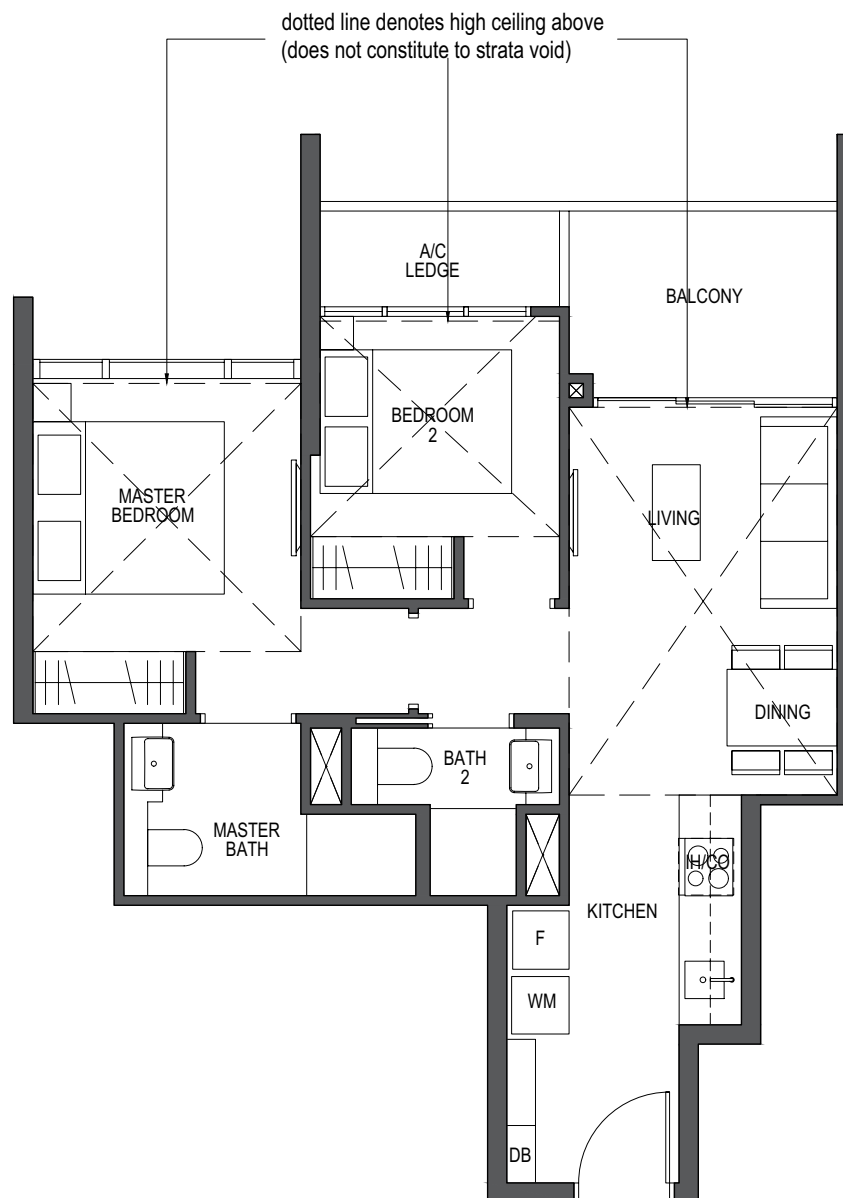
## TYPE PH-2

### 2-Bedroom

62 sq m / 667 sq ft

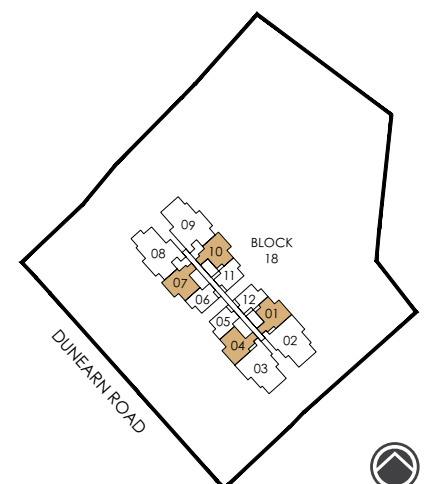
#30-01 & #30-07  
\*#30-10 & #30-04

\*Mirror image



#### LEGEND:

F - Fridge	DW - Dishwasher	WM - Washer cum Dryer
D - Dryer	GH - Gas Hob	CO - Conventional Oven
IH - Induction Hob	DB - Distribution Board	W - Washer



# Penthouse

DRAFT

## TYPE PH-3

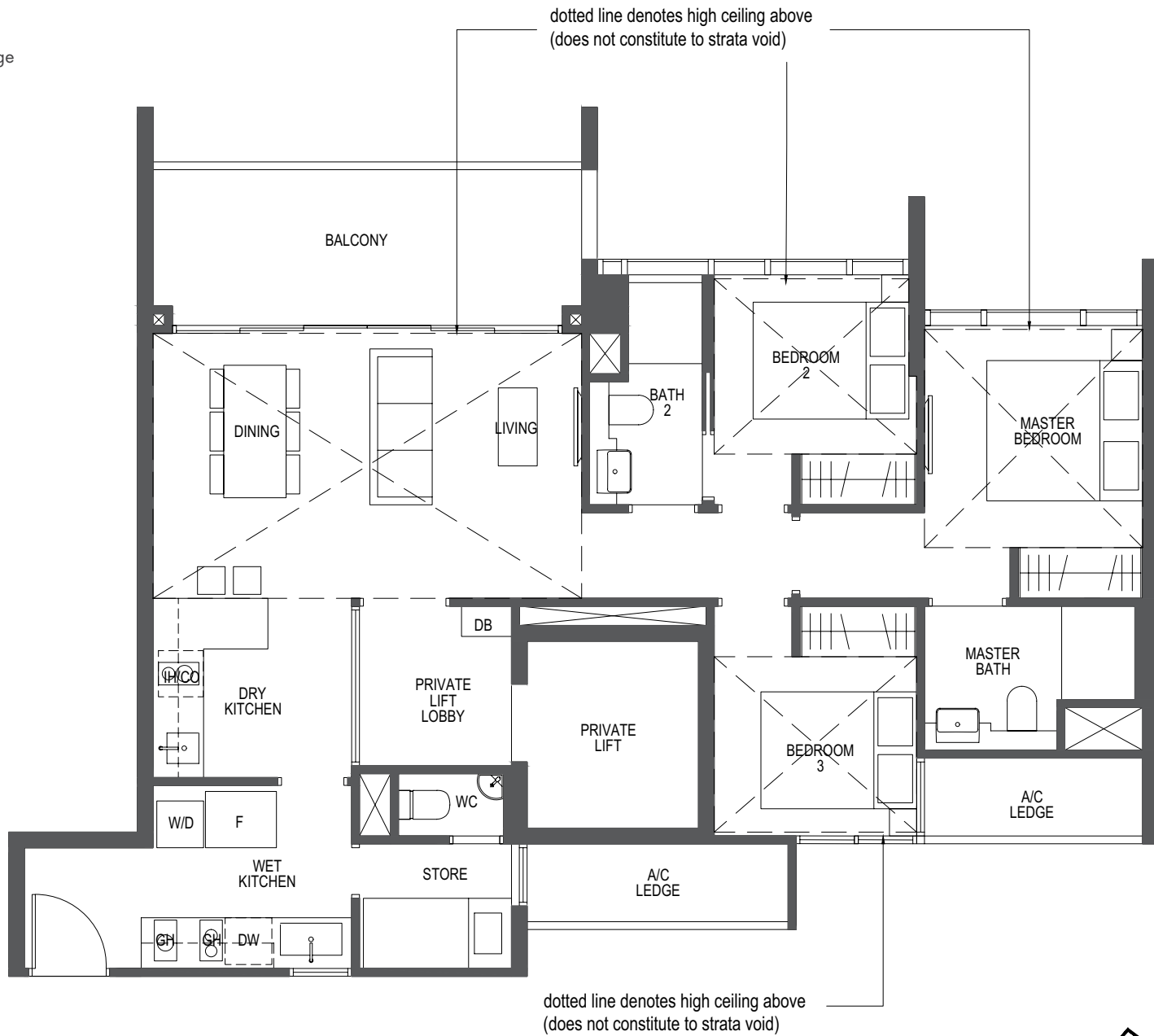
### 3-Bedroom

108 sq m / 1163 sq ft

#30-02

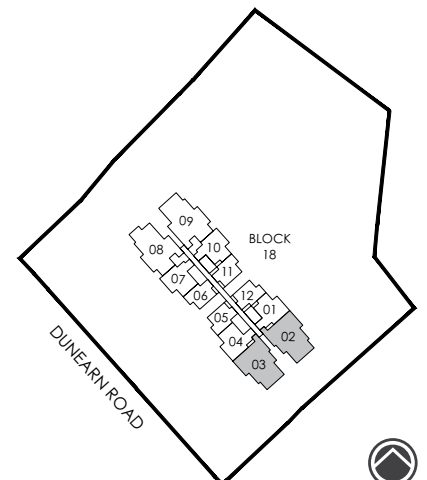
\*#30-03

\*Mirror image



**LEGEND:**

- |                    |                         |                        |
|--------------------|-------------------------|------------------------|
| F - Fridge         | DW - Dishwasher         | WM - Washer cum Dryer  |
| D - Dryer          | GH - Gas Hob            | CO - Conventional Oven |
| IH - Induction Hob | DB - Distribution Board | W - Washer             |



# Penthouse

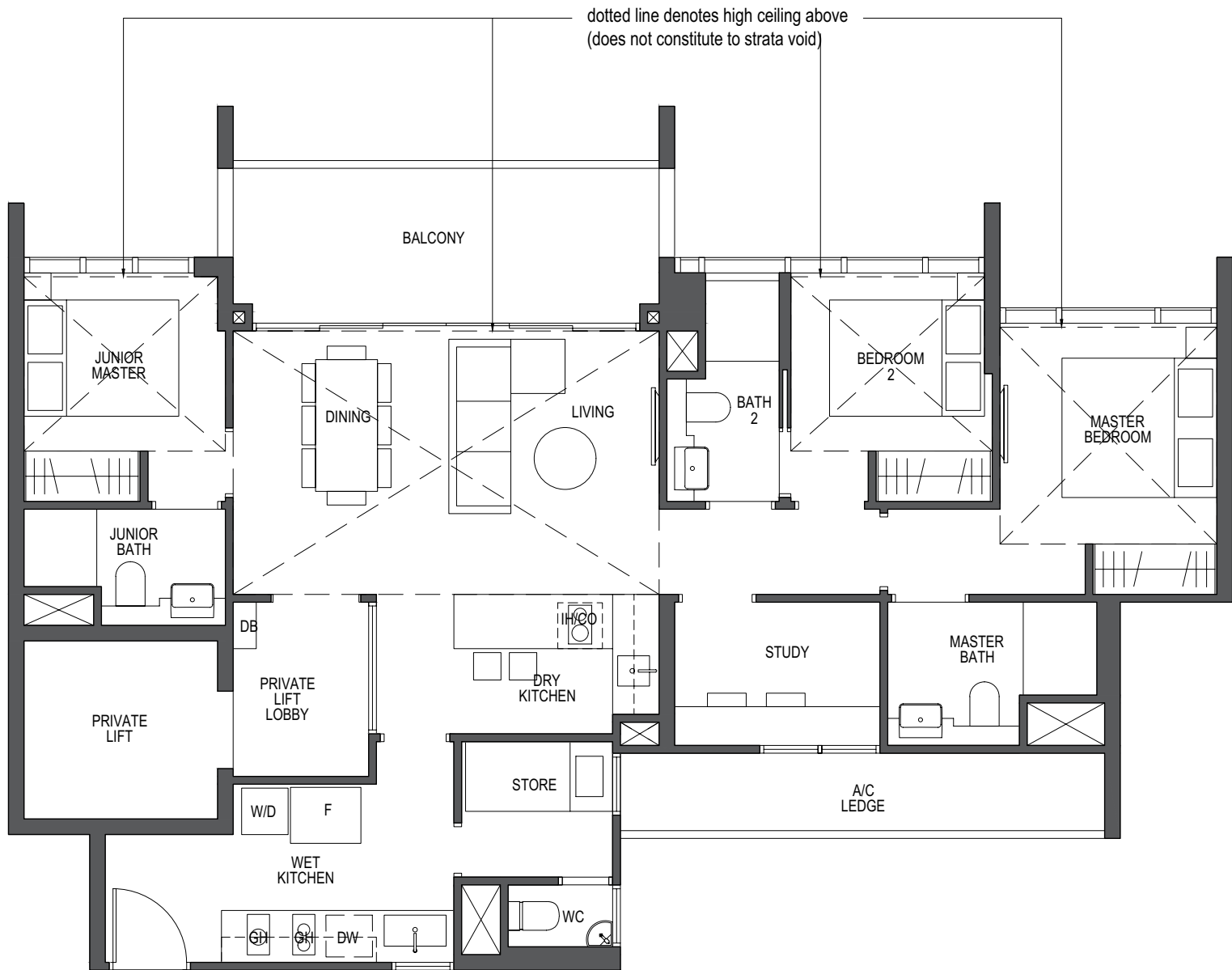
DRAFT

## TYPE PH-4

### 3-Bedroom+Study

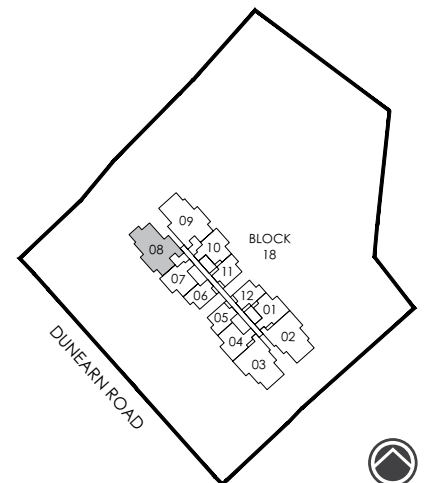
119 sq m / 1281 sq ft

#30-08



**LEGEND:**

- |                    |                         |                        |
|--------------------|-------------------------|------------------------|
| F - Fridge         | DW - Dishwasher         | WM - Washer cum Dryer  |
| D - Dryer          | GH - Gas Hob            | CO - Conventional Oven |
| IH - Induction Hob | DB - Distribution Board | W - Washer             |



All plans are subjected to amendments as may be approved by the relevant authorities. Floor areas are approximate measurements and are subjected to final survey. BP Approval No. A1720-00009-2018-BP01 dated 26/08/2019



# Penthouse

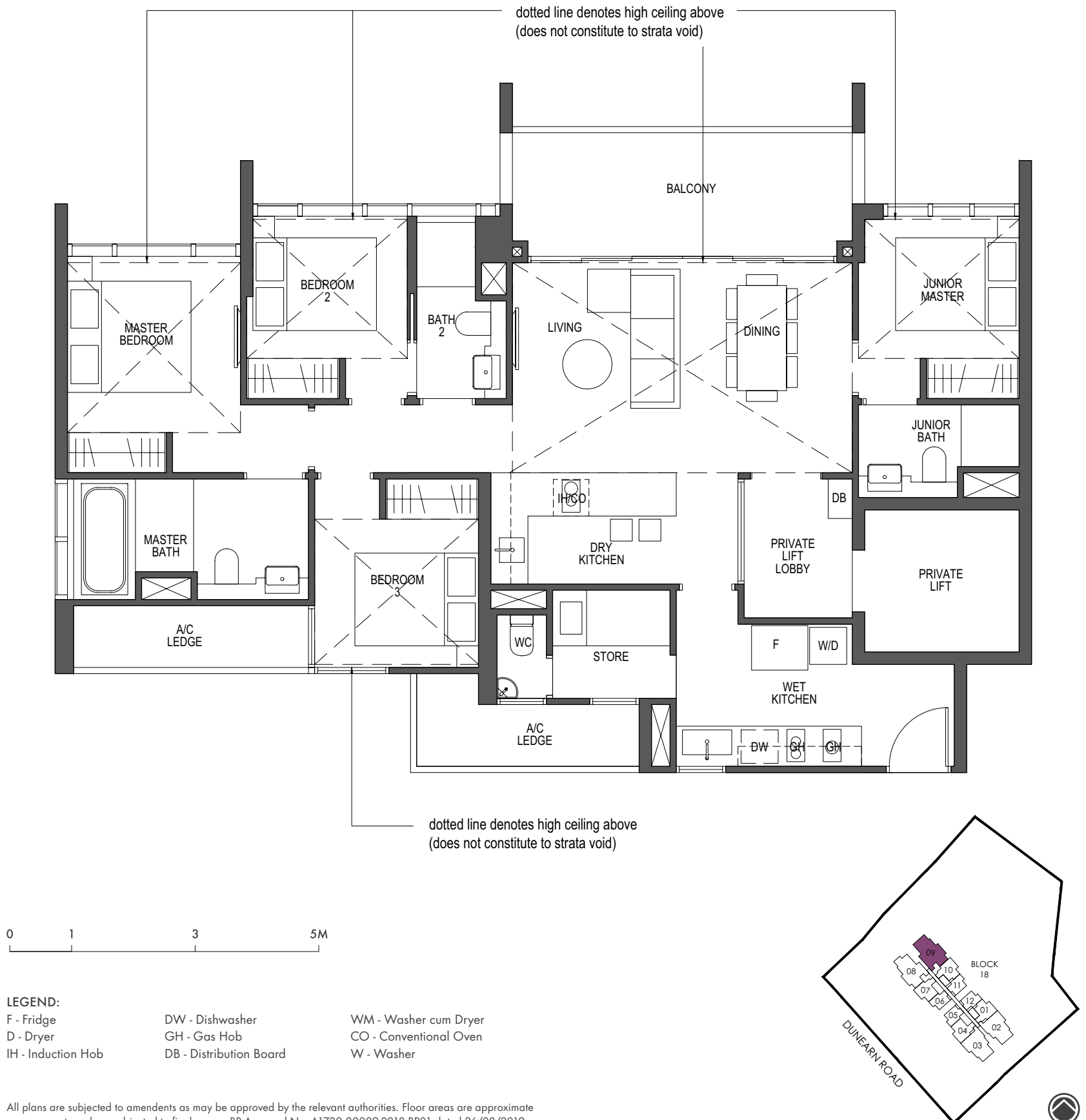
DRAFT

## TYPE PH-5

### 4-Bedroom

128 sq m / 1378 sq ft

#30-09



All plans are subjected to amendments as may be approved by the relevant authorities. Floor areas are approximate measurements and are subjected to final survey. BP Approval No. A1720-00009-2018-BP01 dated 26/08/2019

